

# Celebrating Hispanic/Latinx Heritage Month



Office of Diversity, Equity, and Inclusion  
And Office of Student Success  
Concerns, Comments, or Questions?  
Contact: [tonja.lee@lmunet.edu](mailto:tonja.lee@lmunet.edu)  
Dr. Tonja "Tee" Lee, PhD  
Director of Student Success and DEI

# LMU

School of Medical Sciences  
LINCOLN MEMORIAL UNIVERSITY

VALUES | EDUCATION | SERVICE



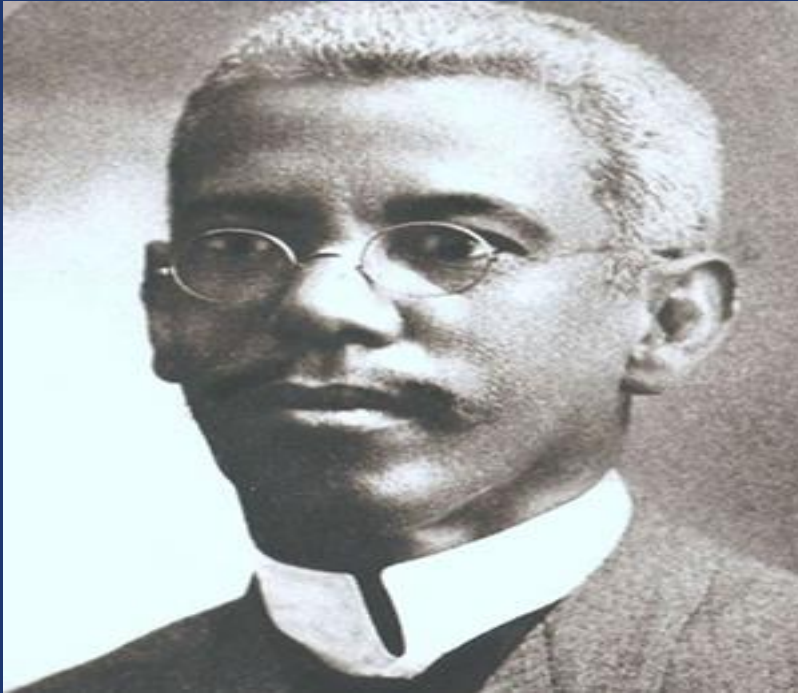
## Dr. Catricia Tilford; MD

A successful board-certified pediatrician who is fellowship trained in pediatric urgent care physician. She is also an Asthma Champion for her local community health center. This title was earned after being one of the lead pediatricians in a state-wide pediatric asthma quality improvement project. This quality improvement project was the 2019 recipient of ABMS “Outstanding Achievement in Quality Improvement Award”.

“As women we have to remember that although we may not always be invited to sit at the table we are more than capable of creating our own tables!! You have to remember your “why” during this journey because there will be times when you want to throw in the towel. Do not quit! Do not believe the lies when they tell you to choose a less competitive residency, or that you are too bold or not approachable when you don’t smile constantly because you’re actually in deep thought. Do not believe the lies that you cannot be the first to do whatever it is that you’re passionate about, because you absolutely can! We know that racial health disparities exist, for various reasons. I believe that one of the biggest ways to improve those disparities is by starting with increasing the amount of graduating Hispanic/Latina physicians and other healthcare professionals into the healthcare system. I know that as an Afro-Latina pediatrician I have a huge responsibility of being an advocate not only for my patients but also for their families, whom I serve in a predominantly Latinx community, because too whom much is given, much is required.

Office of Diversity, Equity, And Inclusion  
And Office of Student Success  
Concerns, Comments, or Questions?  
Contact: [tonja.lee@lmunet.edu](mailto:tonja.lee@lmunet.edu)  
Dr. Tonja “Tee” Lee, PhD  
Director of Student Success and DEI





## Dr. Barbosa; MD

Born in Bayamon, Puerto Rico on July 27, 1857. He was the first Black and Puerto Rican individual to achieve several educational milestones in his country and internationally. In 1875, Dr. Barbosa attended the prestigious Jesuit seminary in Puerto Rico, as the first Black student. Being the first is not always easy, and Dr. Barbosa had to overcome both racism and the language barrier. Dr. Barbosa became the first Puerto Rican to graduate as a medical doctor in the United States and the first Puerto Rican student at the University of Michigan (graduating class of 1880).

Office of Diversity, Equity, And Inclusion  
And Office of Student Success  
Concerns, Comments, or Questions?  
Contact: [tonja.lee@lmunet.edu](mailto:tonja.lee@lmunet.edu)  
Dr. Tonja "Tee" Lee, PhD  
Director of Student Success and DEI

## Antonia Novello; MD

Novello was the 14th Surgeon General of the U.S., appointed by George H. W. Bush in 1990. She was the first woman and Hispanic to serve in this role. Before her appointment, she worked as a pediatric nephrologist before joining the Public Health Service Commissioned Corps, where she was assigned to the National Institutes of Health. Novello was born in Puerto Rico.



Office of Diversity, Equity, And Inclusion  
And Office of Student Success  
Concerns, Comments, or Questions?  
Contact: [tonja.lee@lmunet.edu](mailto:tonja.lee@lmunet.edu)  
Dr. Tonja "Tee" Lee, PhD  
Director of Student Success and DEI

## Benjamin Olmedo - MMSc; PA-C

Class of 2011 alumni of the Yale School of Medicine Physician Associate Program and earned a B.S. in Biological Sciences from California Polytechnic State University, San Luis Obispo in 2002.

Olmedo served as President of his class and the Jack Cole Student Society in addition to being selected as a Downs International Health Research Scholar through the Yale School of Medicine and a Paul Ambrose Community Health Scholar through the Association of Prevention Teaching and Research (APTR). He also served on the Board of Directors for the Student Academy, served as the student member on the Health Disparities Work Group and was awarded a Veteran's Caucus Scholarship.



Office of Diversity, Equity, and Inclusion  
And Office of Student Success  
Concerns, Comments, or Questions?  
Contact: [tonja.lee@lmunet.edu](mailto:tonja.lee@lmunet.edu)  
Dr. Tonja "Tee" Lee, PhD  
Director of Student Success and DEI



## **Mariana Alamillo; PA-C**

Graduated from California State University, Fullerton with a bachelor's in health science and minor in Chicana/o Studies. She is a representative with the American Academy of Physician Assistants and a student ambassador.

“I became a student ambassador because I wanted to help incoming students who face barriers like myself,” she said. “As a first-generation Mexican-American, the process of applying to a master’s program was challenging. As a student ambassador, I have the opportunity to assist students on the process of applying and on the workload.”



Office of Diversity, Equity, And Inclusion  
And Office of Student Success  
Concerns, Comments, or Questions?  
Contact: [tonja.lee@lmunet.edu](mailto:tonja.lee@lmunet.edu)  
Dr. Tonja “Tee” Lee, PhD  
Director of Student Success and DEI

**Paul A. Gonzales - MPAS; PA-C**

Assistant Professor and Founding Director of Didactic Education at California State University, San Bernardino, joining the institution in June 2023. He holds a Master of Physician Assistant Studies (MPAS). Currently practicing at a Federally Qualified Health Center (FQHC) in Cathedral City, California, he focuses on providing comprehensive care to uninsured and/or underinsured patients with HIV, offering gender affirming cross-sex hormone therapy and medication assisted therapy (MAT) for Opioid Use Disorder (OUD). Mr. Gonzales is nationally certified by the National Commission on Certification of Physician Assistants (NCCPA) and licensed as a Physician Assistant (PA) by the California Medical Board.

Office of Diversity, Equity, And Inclusion  
And Office of Student Success  
Concerns, Comments, or Questions?  
Contact: [tonja.lee@lmunet.edu](mailto:tonja.lee@lmunet.edu)  
Dr. Tonja "Tee" Lee, PhD  
Director of Student Success and DEI

## Ildaura Murillo-Rohde - PhD; RN

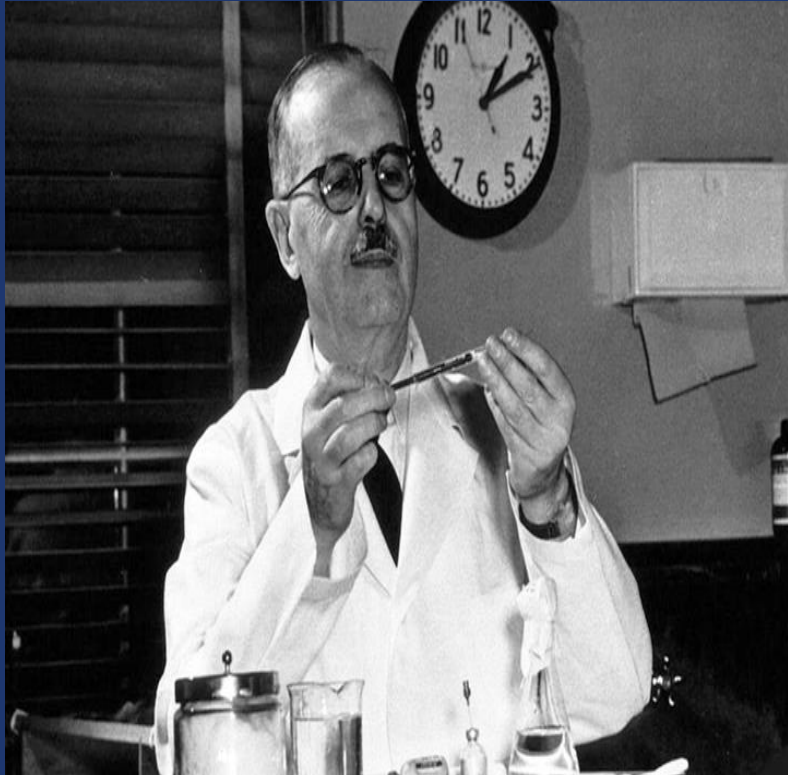
Known as “the Hispanic whirlwind,” Murillo-Rohde was a nurse, advocate, and educator. Originally from Panama, she immigrated to the U.S., where she eventually became the first Hispanic dean of nursing at New York University.

She also founded the National Association of Hispanic Nurses, emphasizing the importance of attracting Hispanic people to nursing.



Office of Diversity, Equity, And Inclusion  
And Office of Student Success  
Concerns, Comments, or Questions?  
Contact: [tonja.lee@lmunet.edu](mailto:tonja.lee@lmunet.edu)  
Dr. Tonja “Tee” Lee, PhD  
Director of Student Success and DEI





## **Bernardo Alberto Houssay; MD**

was an Argentine physiologist. He was admitted to the Pharmacy School at the University of Buenos Aires at 14 years of age and subsequently to the Medical School of the same University. Houssay took up a post as a research and teaching assistant in the Chair of Physiology

His research covered a wide range of physiological fields, but particularly concerned the hormonal control of metabolism and arterial hypertension. He became Director of the Institute of Physiology at the University of Buenos Aires, but was dismissed from the university during the Perón era but was able to found and direct the Institute of Biology and Experimental Medicine in Buenos Aires. He was joint winner of the Nobel Prize for Physiology or Medicine in 1947 for his discovery of the role of the anterior pituitary in carbohydrate metabolism and was he first Argentine Nobel laureate in the sciences.

Office of Diversity, Equity, And Inclusion  
And Office of Student Success  
Concerns, Comments, or Questions?  
Contact: [tonja.lee@lmunet.edu](mailto:tonja.lee@lmunet.edu)  
Dr. Tonja "Tee" Lee, PhD  
Director of Student Success and DEI



## Renee Rodriguez Paro; MD

Pediatric cardiologist, wife and mom of two. I'm Mexican American and was born and raised in Southeastern Arizona and graduated magna cum laude. I went on to attend the University of Chicago Pritzker School of Medicine where I became the first in my family to receive an MD in 2010. In my final year of fellowship, I was the inaugural chief fellow.

In 2016 I completed my training and accepted a position in a multispecialty private group practice in the East Bay Area and currently work part time as an outpatient pediatric cardiologist specializing in general pediatric cardiology, preventative cardiology and fetal echocardiography. I am the co-founder of a nonprofit called Doctor Vegetable and co-host of a podcast called "Reconciling Medicine" alongside my husband.

Office of Diversity, Equity, And Inclusion  
And Office of Student Success  
Concerns, Comments, or Questions?  
Contact: [tonja.lee@lmunet.edu](mailto:tonja.lee@lmunet.edu)  
Dr. Tonja "Tee" Lee, PhD  
Director of Student Success and DEI

## **Carlos Gutiérrez - EdD; MMS; PA-C**

**Passionate about promoting diversity in the PA profession in his academic work and supporting LGBTQ+ and other minoritized patients in his clinical practice. Since 2015, Gutierrez has been practicing family medicine at Glendale Pediatrics and Family Care with a focus on LGBTQ+ health serving a mostly Spanish-speaking community near Phoenix, Arizona. He is the chair of the DEI Taskforce at the Arizona State Association of Physician Assistants. In addition, Dr Gutiérrez is an associate professor in the Department of PA Studies at the University of Pittsburgh and serves as the department's inaugural vice chair for Student Success.**



Office of Diversity, Equity, And Inclusion  
And Office of Student Success  
Concerns, Comments, or Questions?  
Contact: [tonja.lee@lmunet.edu](mailto:tonja.lee@lmunet.edu)  
Dr. Tonja "Tee" Lee, PhD  
Director of Student Success and DEI



**The End**

**Thank You**

**Happy Learning**

Office of Diversity, Equity, And Inclusion  
And Office of Student Success  
Concerns, Comments, or Questions?  
Contact: [tonja.lee@lmunet.edu](mailto:tonja.lee@lmunet.edu)  
Dr. Tonja "Tee" Lee, PhD  
Director of Student Success and DEI